

2023

The Catholic Health Care Foundation of
the Archdiocese of New York
A Decade of Caring





A Message from His Eminence, **Timothy Michael Cardinal Dolan**

The Archdiocese of New York has a long history of responding to the unmet health needs of our communities. I'm proud to say that rising to address the growing array of challenges that government and other institutions can't, or choose not to, is something our Catholic healthcare ministry, ArchCare, does magnificently well.

Whether they are turning unused convents into apartments where young adults with autism can live independently for the first time in their lives, providing a loving, forever home for children with profound disabilities, or bringing comfort and communion to the bedsides of thousands of hospital patients every year, the people of ArchCare are the radiant embodiment of Matthew 25:40, "Whatever you did for the least of these my brothers and sisters, you did for me."

But ArchCare can't do it alone. Providing care with Catholic values that is sustainable and responsive to the growing and complex care challenges people and families face today is impossible without the generous support of our donors.

If you're already a supporter of ArchCare, thank you, and God bless you. If you're just learning about ArchCare's remarkable work, I encourage you to help however you can. In Matthew, Jesus tells us the questions He's going to ask before granting us eternal salvation:

When I was sick, did you heal me?

When I was sick, did you visit me?

When I was sick, did you comfort me?

I thank God that when my time comes to stand before Jesus and He asks me those questions, I'll be able to say, "Yes, Lord! Let me tell you about ArchCare!"

With prayerful best wishes, I am,

Yours faithfully in Christ,

+ Tim. Card. Dolan

Our Mission

As the Continuing Care Community of the Archdiocese of New York, ArchCare's mission is to foster and provide faith-based holistic care to frail and vulnerable people unable to fully care for themselves. Through shared commitments, ArchCare seeks to improve the quality of the lives of these individuals and their families.

Values

Justice

We live and work as members of a community and all members of our community have rights that are coupled with responsibilities.

Inclusiveness

While we are unified as one community, each of us is valued for our unique heritage and defined only by our eagerness to contribute to the best of our abilities.

Respect

Each of us is as important as any other—whether resident, family, friend, volunteer, or employee—and we must respect each other if we are to receive respect.

Integrity

To be a truly caring community, we must speak and act with total honesty, without concern for the consequences of our truthfulness.

Benevolence

We recognize that those with the greatest needs often have the least resources, and we will provide the same care to the disenfranchised that we do to those who have been more fortunate.

Humility

While subscribing to high ideals, we will recognize our individual and collective limits. Only then can we continue to grow towards who and what we so earnestly strive to be.

Spirituality

While we take pride in following the traditions of the Roman Catholic Church, we seek to serve people of all beliefs equally and to fulfill each individual's spiritual needs by respecting their distinct beliefs.

Dear Friends of ArchCare,

This year marks the 10th anniversary of ArchCare's annual Gala in support of the Catholic Health Care Foundation of the Archdiocese of New York.

Contributions from our donors and community benefactors at the Gala and throughout the year help fund the diversification of ArchCare's programs and services, support the modernization and upgrading of our facilities and power parish and community health education and outreach efforts that enable us to reach deeper into communities to care for those with the greatest needs and the least ability to pay.

Among a host of other exciting examples, over the last year alone contributions to the Foundation made possible:

- 94,000 bedside visits to patients in area hospitals by the 28 priests of ArchCare's growing Hospital Chaplaincy Program.
- The modernization, relocation and expansion of our specialty hospital for children and young adults with extraordinary medical needs at Terence Cardinal Cooke Health Care Center, which we renamed ArchCare at Mother Cabrini Hospital.
- The commencement of work to transform an unused convent at Immaculate Conception Church in Westchester into ArchCare's second independent apartment community for adults living with autism.

And that only scratches the surface of the myriad ways donations to the Foundation are helping improve the health and lives of the more than 12,000 people ArchCare serves daily across the archdiocese and beyond.

We invite you to read more about the remarkable ways the Foundation has enabled ArchCare to change countless lives for the better.

Together, with your generous support, we can change countless more.

Sincerely,

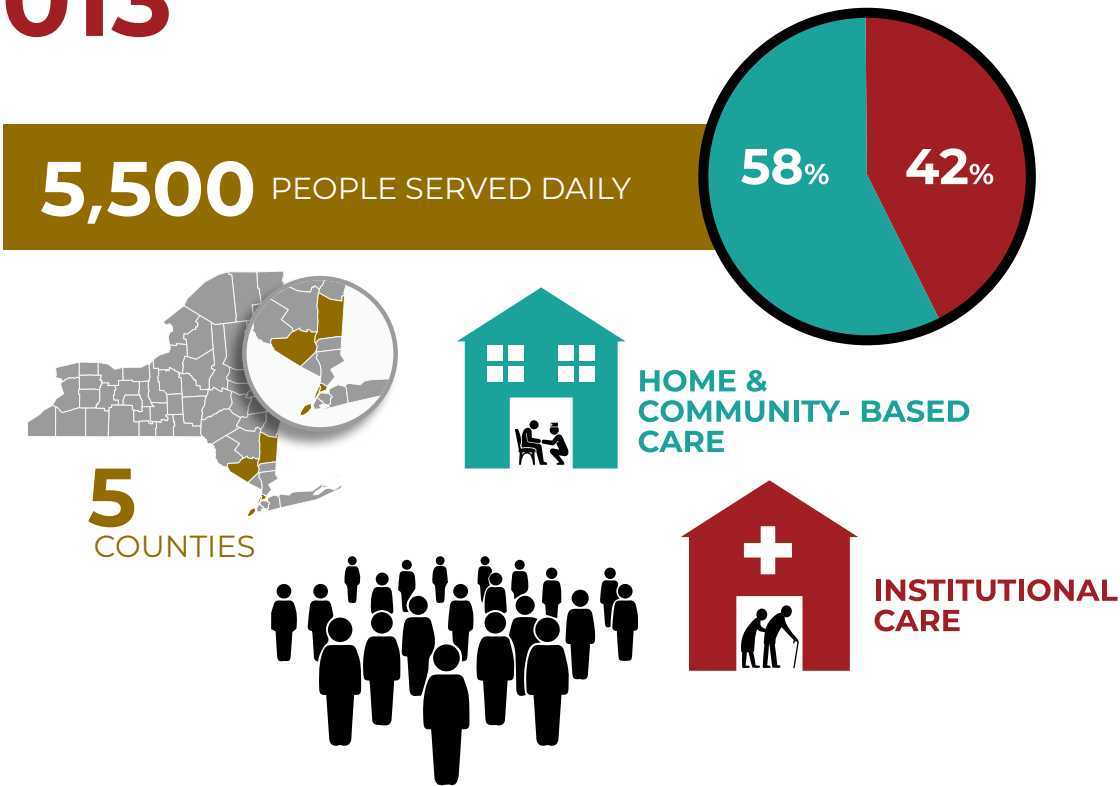


Scott LaRue
President & CEO
ArchCare

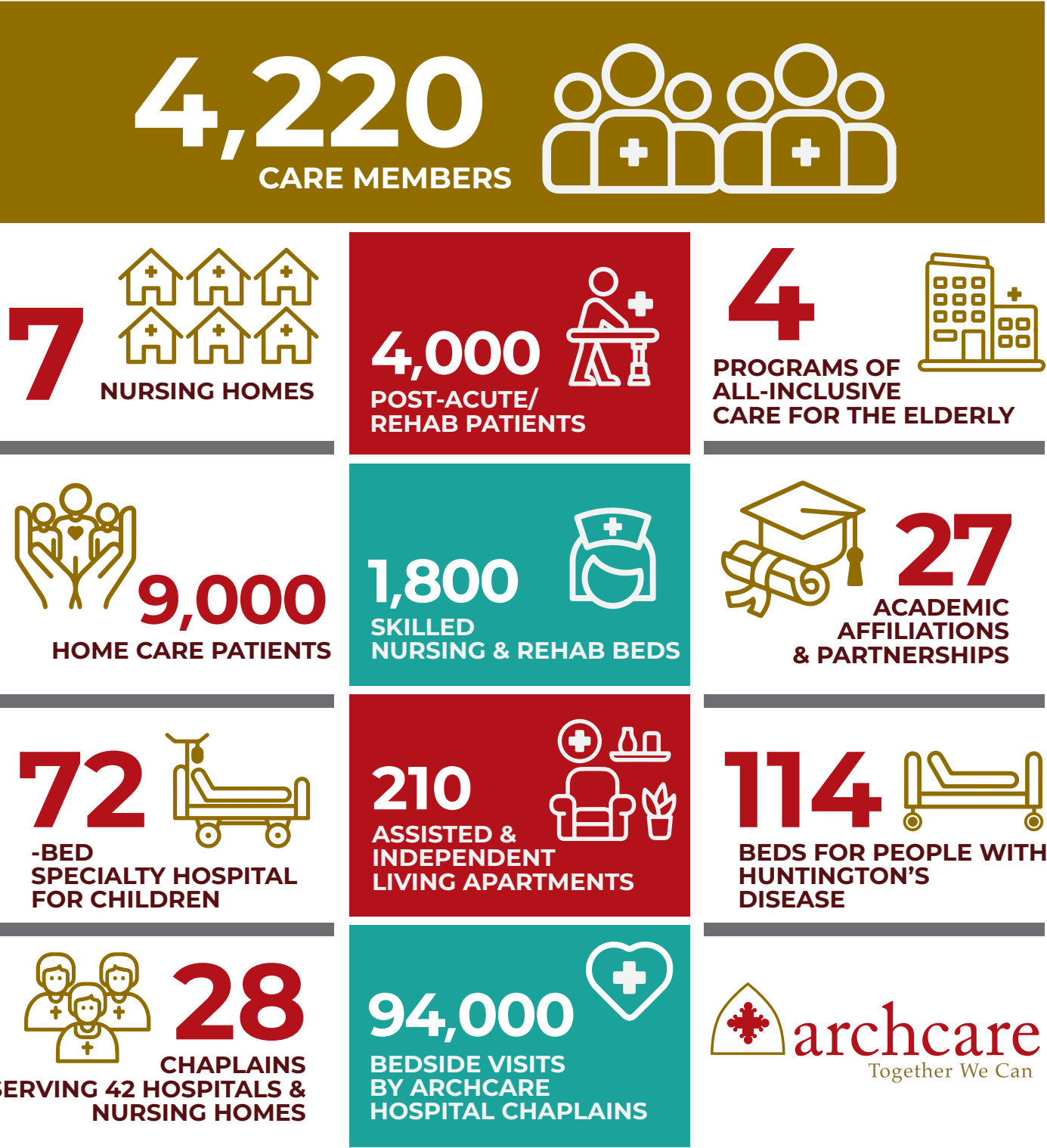
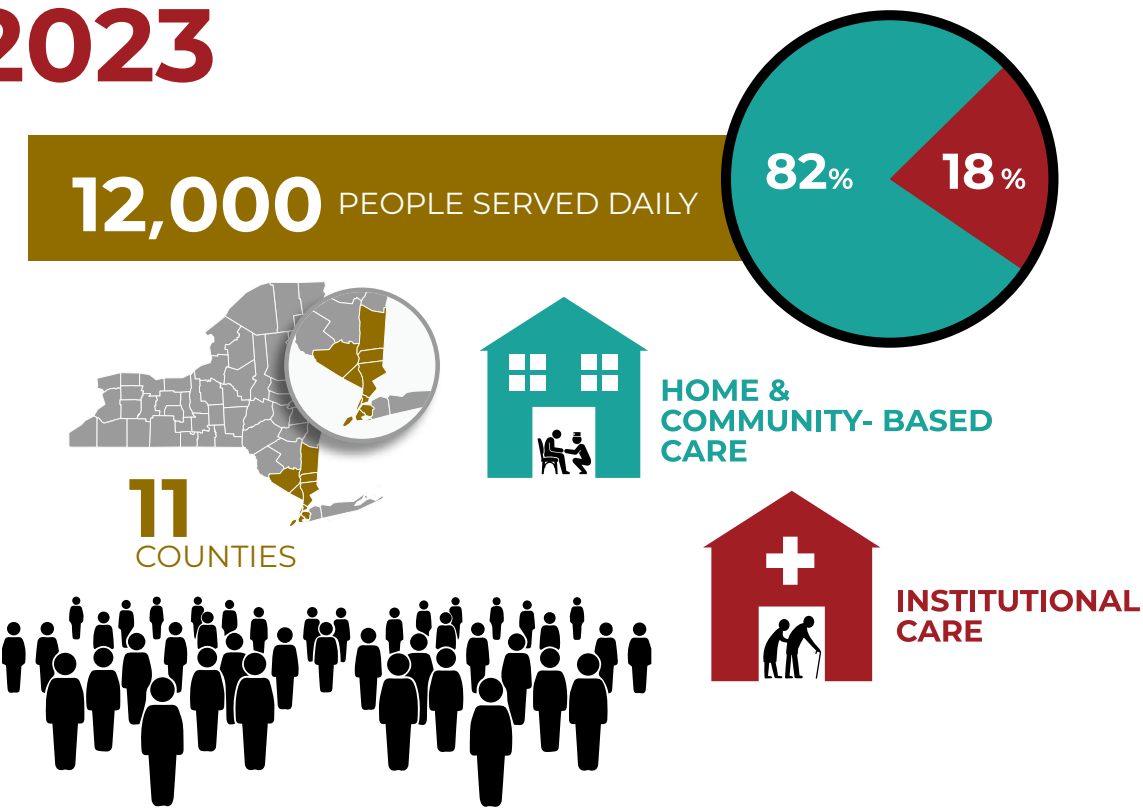


Francis J. Serbaroli, Esq.
Chairman of the Board of Trustees
ArchCare and the
Catholic Health Care Foundation

2013



2023





A Decade of Caring





2012

Cardinal Dolan presides over the dedication of ArchCare's second Program of All-inclusive Care for the Elderly (PACE), at San Vicente de Paúl in the Bronx.

ArchCare receives regulatory approval to deliver care right to people's front doors as the new sponsor of Visiting Nurse Regional Health Care System.

The rehabilitation gyms at ArchCare at Ferncliff and ArchCare at Carmel Richmond undergo extensive renovations and upgrades.

// **Contributions provide clothing, shoes, personal care items and other essentials to 59 disabled seniors left stranded in a city shelter during Hurricane Sandy, as ArchCare springs into action to turn an unused nursing home unit into an emergency assisted living center to care for them.**



2013

ArchCare breaks ground for its third PACE center, at Carmel Richmond on Staten Island.

ArchCare provides 24/7 care for more than 50 retired Jesuit priests residing on the campus of Fordham University, allowing them to age together in the community they love.

A new Mission on the Move program lets care members tap Foundation funds to grant special wishes of the individuals for whom they care, from fulfilling a terminally ill resident's lifelong wish to visit the top of the Empire State Building, to arranging for a frail resident to visit her quadriplegic son in the nursing home where he lived for the last time.

Contributions help subsidize rent and other expenses so more than a dozen seniors living in nursing homes unnecessarily can return to independence in their own apartments.

// **Cardinal Dolan cuts the ribbon to open the newly enlarged and renovated rehabilitation center at ArchCare at Mary Manning Walsh.**





ArchCare launches a parish and community health advocates network to help families access needed health and social services across the archdiocese.

2014

The 10-bed Dawn Greene Hospice Unit opens at ArchCare at Mary Manning Walsh Home thanks to a \$4 million gift from the Jerome L. Greene Foundation.

2015

ArchCare kicks off construction of a new 38-bed Center for Neurodegenerative Care at ArchCare at Ferncliff, the only specialized care center in the Hudson Valley for people with Huntington's disease and ALS, also known as Lou Gehrig's disease.

2016

ArchCare assumes sponsorship of Dominican Sisters Family Health Services and Family Home Health Care, further expanding its home care ministry and freeing up the Sisters' resources for other critical uses.



A state-of-the-art ArchCare health center on wheels hits the road, bringing primary care, health screenings and other vital services to agricultural workers, seniors and other underserved populations in the northern counties of the archdiocese.

ArchCare's PACE program opens a satellite social day center to provide seniors in Staten Island's St. Mark's neighborhood with meals, social services and activities to keep them active and socially engaged.



2017

ArchCare announces plans to turn an unused convent on the campus of St. Teresa of the Infant Jesus on Staten Island into apartments for adults living with autism.

Contributions enable a young resident of ArchCare's Center for Neurodegenerative Care in Rhinebeck to visit the Vatican and attend a special audience with Pope Francis to help raise awareness of Huntington's disease.



ArchCare provides no-cost nursing care and physical and occupational therapy to formerly conjoined twin girls from the Dominican Republic following their arduous separation surgery.

// The Foundation arranges for young residents of ArchCare's Specialty Hospital for Children to travel to St. Patrick's Cathedral to receive the Sacrament of Confirmation from Cardinal Dolan himself.





2018

ArchCare integrates the Archdiocese of New York's hospital chaplaincy program into its ministry, setting it up for rapid expansion to more than 42 area hospitals.

Contributions to the Foundation enable ArchCare to care for a young woman with profound intellectual disabilities and extraordinary medical needs that no other facility in New York could address.

2019

ArchCare at St. Teresa's opens on Staten Island, allowing nine adults with autism to live in their own apartments, away from their families, for the very first time.

ArchCare improves access to skilled nursing care, health aides and multi-faith pastoral care at home in the upper counties of the archdiocese as the new sponsor of Kingston-based Always There Home Care.

2020

ArchCare assumes sponsorship of Providence Rest Nursing Home from the Sisters of St. John the Baptist, helping the sisters sustain their mission and ensuring continued access to Catholic-sponsored skilled nursing care in the East Bronx.

// Contributions help keep nursing home residents and PACE participants entertained and stave off boredom after social activities and visitation were curtailed by the pandemic.



2021

The Foundation contributes \$1.5 million to constructing a new, state-of-the-art 38-bed Center for Advanced Memory Care at ArchCare at Ferncliff.

2022

Cardinal Dolan officially dedicates ArchCare's newly renovated and expanded specialty hospital for children and young adults with profound disabilities at Terence Cardinal Cooke Health Care Center, now known as ArchCare at Mother Cabrini Hospital.

Funding from the Foundation makes possible the expansion of ArchCare's Center for Neurodegenerative Care at Ferncliff from 38 to 66 beds.

ArchCare responds to public outcry over plans to close a skilled nursing facility in Dutchess County by creating Thompson House at Ferncliff to accept 24 of its long-term residents and hiring members of the facility's staff to care for them.

ArchCare and Columbia University partner to create a fully equipped mobile dental clinic that travels to senior centers, schools and other sites to provide comprehensive dental care for residents of Washington Heights, Harlem, Inwood and the South Bronx, many of whom have limited access to care.

2023

ArchCare assumes sponsorship of Eger Homes and Services, which was in danger of closing, to ensure continuity of the Lutheran-sponsored nursing home and assisted living center's mission on Staten Island.

// ArchCare kicks off construction of its second independent apartment community for adults living with autism, on the campus of Immaculate Conception Parish in Westchester.





ArchCare Honorees 2012-2023

FLORENCE EISENBERG **BOARD LEADERSHIP AWARD**

2013

His Excellency,
The Most Reverend Dennis J. Sullivan
Bishop of Camden

2014

Carmel Richmond
Community Leadership Board

2015

Manfred Altstadt, Chief Operating Officer (Past)
Mutual of America

2017

Joseph P. Anderson
Co-Founder/Chairman, Benovia Winery

2019

Karl P. Adler, MD
Archbishop's Delegate for Healthcare
Former Vice Chairman, ArchCare

ARCHCARE PARTNERSHIP AWARD

2012

Joseph G. Beck, Co-Head
Raymond James and Associates

2012

Visiting Nurse Regional Health Care System Board

2014

Lenny Tanzer
President, Patient Care Associates, Inc.

2017

Michael Segal, R.Ph.
Chief Executive Officer, PharmScript LLC

2018

Anthony J. Bacchi, MD, Founder/CEO, Telistat

2019

Anthony Colao, Sr.
President, Flag Waterproofing & Restoration Co.

2022

Brendan J. Gallagher
President, New York, Arthur J. Gallagher & Co.

2023

Bond, Schoeneck & King PLLC

2023

Berry Weiss, CEO
Preferred Home Care of New York and
The W Group

ANN MARA **COMMUNITY SERVICE AWARD**

2012

Dr. Kenneth L. Davis, President and CEO
The Mount Sinai Medical Center

2013

Marco and Cristina Grassi

2014

J. Ganesh Bhat, MD
Atlantic Dialysis Management Services

2015

Sovereign Military Order of Malta
New York City Area

2016

Dr. Thomas Kalchthaler
Chief of Geriatrics, St. Joseph's Medical Center

2018

Stephen Harold Schott
Principal, CAPTRUST Investment Advisors

2022

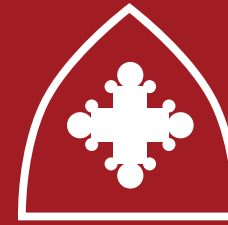
Katie Ledecy
19-time world champion and seven-time
Olympic gold medalist in swimming

ARCHBISHOP EMERITUS **EDWARD CARDINAL EGAN** **LIFETIME ACHIEVEMENT AWARD**

2015

Monsignor Charles J. Fahey
Priest of the Diocese of Syracuse
Marie Ward Doty Professor of
Aging Studies (Emeritus)
Fordham University

A Night At the Gala 2023



ArchCare President & CEO Scott LaRue took to the stage to thank donors as contributions passed the \$2 million mark for the first time ever.



Maureen Bujno, left, and Camille Kelleher, center, enjoy the evening with ArchCare board members, l-r, Steve Bujno, Rory Kelleher, Esq. and Francis Serbaroli, Esq.



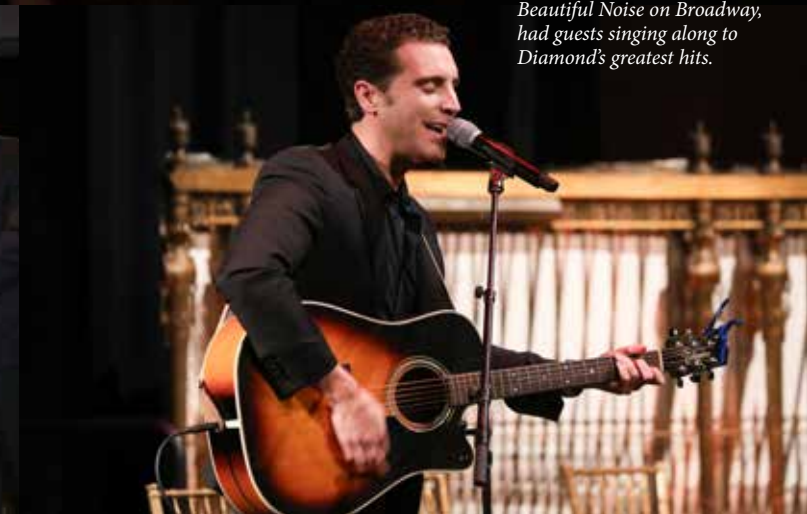
Berry Weiss, founder and CEO of Preferred Home Care of New York and The W Group Assisted Living Communities, received an ArchCare Partnership Award. l-r: ArchCare President & CEO Scott LaRue; Berry Weiss; His Excellency, Bishop Edmund Whalen, Auxiliary Bishop of the Archdiocese of New York; and ArchCare board chair Francis Serbaroli, Esq.



Special guest former New York Giants quarterback and two-time Super Bowl champion Eli Manning shares his thoughts with longtime gala emcee Rosanna Scotto of Fox 5 New York.



Bond, Schoeneck & King, PLLC was honored with an ArchCare Partnership Award. l-r: Scott LaRue; BSK lawyers Louis DiLorenzo, Esq., Raul Tabora, Jr., Esq., and Jessica Moller, Esq.; Bishop Whalen; ArchCare board chair Francis Serbaroli; and BSK's Daniel Murphy, Jr., Esq.



Nick Fradiani, star of the Neil Diamond musical A Beautiful Noise on Broadway, had guests singing along to Diamond's greatest hits.

Cumulative
Gifts
2012-2023

\$500K - \$1M

Morrison Living

\$250K - \$500K

Arthur J. Gallagher Risk Management Services,
Gallagher Benefit Services and Cool Insuring Agency
EmblemHealth
Patient Care Associates, Inc.
PharmScript, LLC
Eric and Wendy Schmidt
Theradynamics
Webster Bank

\$100K - \$250K

Joseph P. Anderson and Mary K. Dewane
Aspire Advisors, LLC
Atlantic Dialysis Management Services
Atlantic Tomorrow's Office
Joseph G. Beck and Bonnie M. Robinson
BioReference Laboratories, Inc.
Bond, Schoeneck & King PLLC
Calvary Hospital
CMS Compliance Group, Inc.
Evolvere Health
FDR Services Corp.
ImagineMIC / MonitorMe
Diane and Scott LaRue
Level Line Construction
Long Term Solutions, Inc.
LTC Consulting Services, SPS Community Solutions
(SPSCS) and Senior Community Services (SCS)
Medical Healthcare Services P.C.
Mount Sinai Health System
Mutual of America

Thomas M. O'Brien
Parish Property Management
PKF O'Connor Davies
Preferred Home Care of New York and The W Group
Providence Rest Nursing Home
PyroSignal & Suppressions, Inc.
Signature Bank
W & M Fire Protection Services
ZDG, LLC

\$50K - \$100K

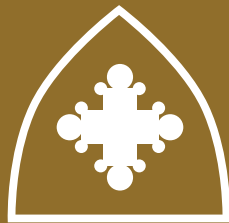
A & M Electrical Service
Acheson Doyle Partners Architects
Advanced Care Staffing
CAPTRUST
Dalpos Architects
Essen Health Care
Flag Waterproofing and Restoration Company
G-net Construction Corp. / ATEC Contracting
Greater New York Hospital Association
IPC Healthcare
Mary Manning Walsh Home - Leadership,
Medical Administration, and Family Circle
Medline Industries, Inc.
Kate and Bob Niehaus
OLA Consulting Engineers
Parker Jewish Institute and AgeWell New York
Precision Health / Medfax
Quality In Real Time
Raymond James | Morgan Keegan
Rossi Foundation
Schwartz Sladkus Reich Greenberg Atlas, LLP
Senior Care Emergency Medical Services
Skilled Wound Care
SMD Inc.

SOMOS Community Care
Unitex Healthcare Laundry Services
WellSky
Windels Marx Lane & Mittendorf, LLP
ZE Contracting, Inc.

\$25K - \$50K

365 Data Centers
Patricia and Thomas Alberto
Andron Construction Corp.
Bestcare, Inc.
Boyd Watterson Asset Management, LLC
Building Concepts Inc.
Cabrini of Westchester
Carmelite Sisters for the Aged and Infirm
Catholic Charities of the Archdiocese of New York
Tara and Luis Cortes
Craine Air Conditioning Inc.
Daraja Enterprises
Edward J. "Buzz" Dowling, Jr.
Edison Home Health Care
Elaine and Manfred Altstadt
EmPRO Insurance Company
Espaces Verts, Inc.
Fiveboro Printing
The Green Foundation
Greenberg Traurig, LLP
Jeffrey J. Hodgman
Jeannie and George Irish
Dr. Thomas Kalchthaler
Rory and Camille M. Kelleher
Dr. Anthony Lechich
The Mara Family
Esther and Mitchell Marsh

Maun-Lemke Speaking & Consulting, LLC
The Mother Cabrini Health Foundation
The New Jewish Home
Personal Healthcare
Platinum Home Health Care
RhumbLine Advisers
Riehm Plumbing Corporation
SimiTree Healthcare Consulting
Strand Electric
G.T. Sweeney
Tabula Rasa / CareVention HealthCare
Michael P. Tempesta, Esq. and
Marietta P. Tempesta
Washington Square Partners
Wilson Elser Moskowitz Edelman
& Dicker LLP



ArchCare and Catholic Health Care Foundation Board of Trustees

His Eminence, Timothy Michael Cardinal Dolan, Honorary Trustee

Francis J. Serbaroli, Esq., Chairman

Karen Gray, Esq.

Thomas M. O'Brien, KM*, Vice Chair

Clarion E. Johnson, MD, KM

Thomas E. Alberto, CPA

Rory Kelleher, Esq., KM

Steve Bujno, KM

Monsignor Joseph LaMorte

John Cahill

Richard Park, MD

Tara A. Cortes, Ph. D., Secretary

Kathryn Rooney, Esq.

HMEH Fra' John T. Dunlap
Prince and Grand Master
of the Order of Malta

Joseph Saporito, CPA

G.T. Sweeney

Monsignor Charles J. Fahey

Gennaro (Jerry) Vasile, Ph.D.

Thomas J. Fahey, Jr., MD

Bishop Gerald Walsh

Eric P. Feldmann

Scott LaRue, KM

Sister Seline Flores, CSJB

President & CEO, ArchCare
Ex-Officio

John (Jack) Gleason, Esq.

**KM-Knight of Malta*

Contributions And Use of Funds



	2012	2013	2014	2015	2016	2017	2018	2019	2020	2021	2022	2023 (through 10/31)	TOTAL
Donations and Grants Received													
ArchCare Gala	\$849,534	\$1,016,605	\$1,099,851	\$1,169,464	\$1,147,333	\$1,379,588	\$1,550,184	\$1,444,950	\$1,204,759	\$1,124,690	\$1,858,555	\$1,543,756	\$15,389,269
OtherContributions	\$102,818	\$103,357	\$40,628	\$44,188	\$84,911	\$141,760	\$443,954	\$18,045	\$99,945	\$126,292	\$122,552	\$205,775	\$1,534,225
Bon Secours: Pastoral care program grant							\$350,000	\$350,000	\$350,000	\$350,000	\$350,000	\$350,000	\$2,100,000
ArchCare at Carmel Richmond					\$500,000			\$865,218	\$638,737	\$1,000,000	\$1,300,000	\$1,200,000	\$5,503,955
Fidelis: Pastoral care and TimeBank program grants					\$471,500	\$471,500							\$942,500
Kateri Residence: Proceeds from sale of nursing home			\$35,087,242				\$800,000	\$2,009,567					\$37,896,809
ArchCare at Mary Manning Walsh Home					\$472,878			\$1,407,238	\$1,058,327	\$1,000,000	\$1,000,000	\$1,200,000	\$6,138,443
TOTAL	\$952,352	\$1,119,962	\$1,140,479	\$36,300,894	\$2,676,122	\$1,992,848	\$3,144,138	\$6,095,018	\$3,351,768	\$3,600,982	\$4,631,107	\$4,499,532	\$ 69,505,202

Direct Support of ArchCare Programs													
ArchCare at Ferncliff: Pastoral care			\$110,000	\$110,000									\$220,000
ArchCare at Ferncliff: Rehabilitation equipment		\$50,000											\$50,000
ArchCare at Ferncliff: Other support of ministry							\$500,000						\$500,000
ArchCare at San Vicente de Paúl: Electronic medical records			\$180,080										\$180,080
ArchCare at San Vicente de Paúl: Assisted living program		\$362,027											\$362,027
ArchCare at San Vicente de Paúl: Other support of ministry												\$4,250,000	\$4,250,000
ArchCare Senior Life PACE: Special events, outings and celebrations					\$1,148,448		\$2,785,036	\$827,656					\$4,761,140
Autism Housing					\$24,385		\$716,348	\$1,699,085	-\$152,642	-\$27,396	\$49,400	\$56,613	\$2,365,793
Catholic Health Care System								\$498,268					\$498,265
Catholic Managed Long-Term Care Plan		\$60,000											\$60,000
CRI			\$3,280	\$631,769	\$791,190								\$1,426,239
Dominican Sisters Family Health Services: Pastoral care					\$17,012		\$46,828	\$48,345	\$58,953	\$1,284			\$172,422
Dominican Sisters Family Health Services: Electronic medical records							\$1,725,256	\$31,087					\$1,756,343
Dominican Sisters Family Health Services: Other support of ministry							\$400,000	\$500,000					\$900,000
Hospital Chaplaincy Program						\$1,004,484	\$1,727,537	\$1,441,735	\$1,383,681	\$770,652	\$1,144,057	\$1,269,837	\$8,741,983
Kittay Housing Grants: Rent subsidies for seniors formerly in nursing homes	\$6,373	\$87,427	\$132,447	\$118,789	\$153,578	\$88,842	\$136,669	\$76,192	\$72,619	\$62,769	\$34,854	\$49,841	\$1,020,400
Mobile Health Clinic				\$94,750	\$142,127	\$142,924	\$100,511	\$140,668					\$620,980
Parish Integration: Parish health and wellness outreach			\$500,000			\$231,272	\$240,720	\$173,008	\$186,222	\$221,933	\$176,745	\$139,856	\$1,869,756
TimeBank						\$445,402	\$541,058	\$268,512	-\$18,665				\$1,236,307
Together We Can												\$500,000	\$500,000
TOTAL	\$6,373	\$559,454	\$925,807	\$955,308	\$1,086,895	\$3,102,769	\$8,919,963	\$5,704,553	\$1,530,168	\$1,029,242	\$1,405,056	\$6,266,147	\$31,491,735

Catholic Health Care Foundation of the Archdiocese of New York
Audited financial statement for the year ended December 31, 2022

Revenue	
Contributions and grants received	\$2,296,947
Investment income	\$372,897
Other revenue	\$-171,275
TOTAL REVENUE	\$2,498,569
Expenses	
Grants and support of ArchCare programs	\$1,452,513
Event expenses (ArchCare Gala, Spirit of the Season, Wine Tasting with Cardinal Dolan)	\$372,660
TOTAL EXPENSES	\$1,825,173
REVENUES LESS EXPENSES	\$673,396
Total assets	
	\$38,191,702
Total liabilities	\$237,270
Net assets of fund balances	\$37,954,432

The Catholic Health Care Foundation of the Archdiocese of New York is rated four stars—the highest rating possible—by Charity Navigator, which assesses charities’ overall financial health and efficiency, sustainability, trustworthiness and commitment to sound governance practices.



If this organization aligns with your passions
and values, you can give with confidence.
— Charity Navigator

Together, We Can Change Lives



CONTRIBUTE

Gifts can be made through one-time donations, regular cash donations, or matching contributions from your employer. If your company has a matching gifts program, you may be able to increase the value of your donation through that program.



VOLUNTEER

Your time and talent can make a real difference in people’s lives. If you want to make a meaningful difference in your community, we want to hear from you!



QUALIFIED CHARITABLE DISTRIBUTIONS

For donors age 70 1/2 or over, qualified charitable distributions from your IRA can provide additional tax savings.



BEQUESTS

Your legacy can reflect what is most important and meaningful to you and serve as an inspiration to your loved ones and your community.

